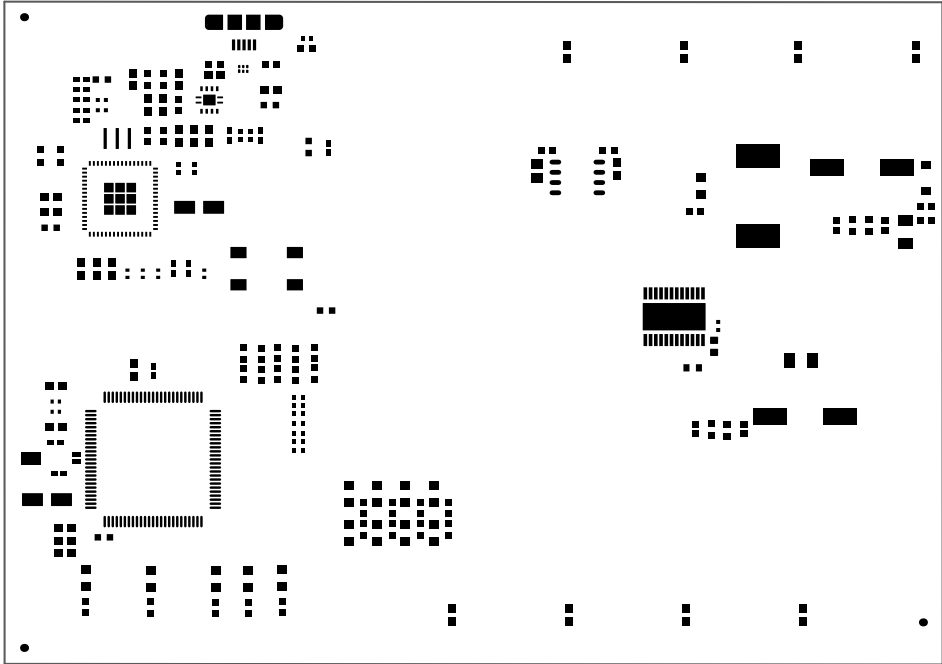
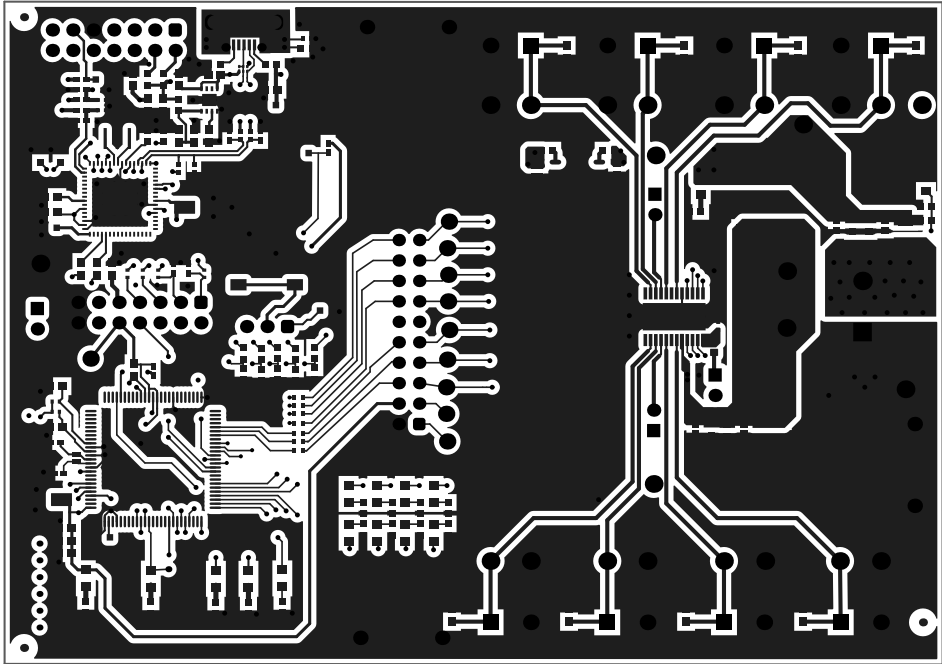


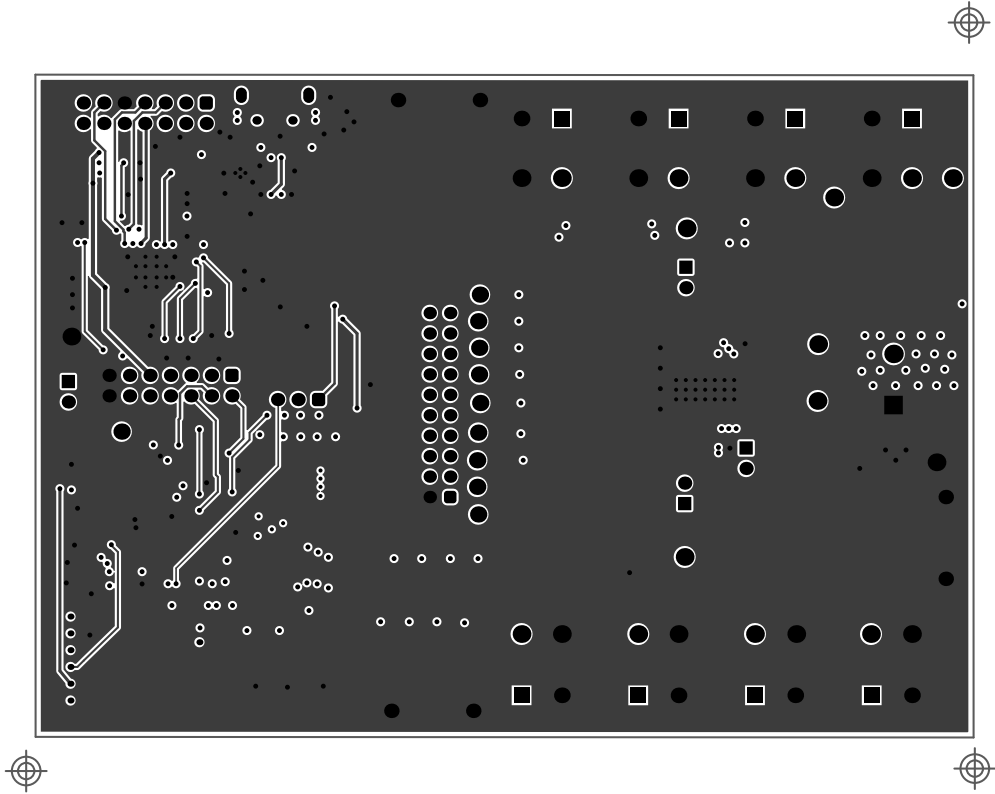
ALL ARTWORK VIEWED FROM TOP SIDE	BOARD #: DRV81008-Q1EVM_A	REV: A	SVN REV: Not in version control
LAYER NAME = M1:Board Outline	TID #: N/A		
PLOT NAME = Multilayer Composite Print	GENERATED : 11-06-2024 10:48:24 AM	TEXAS INSTRUMENTS	



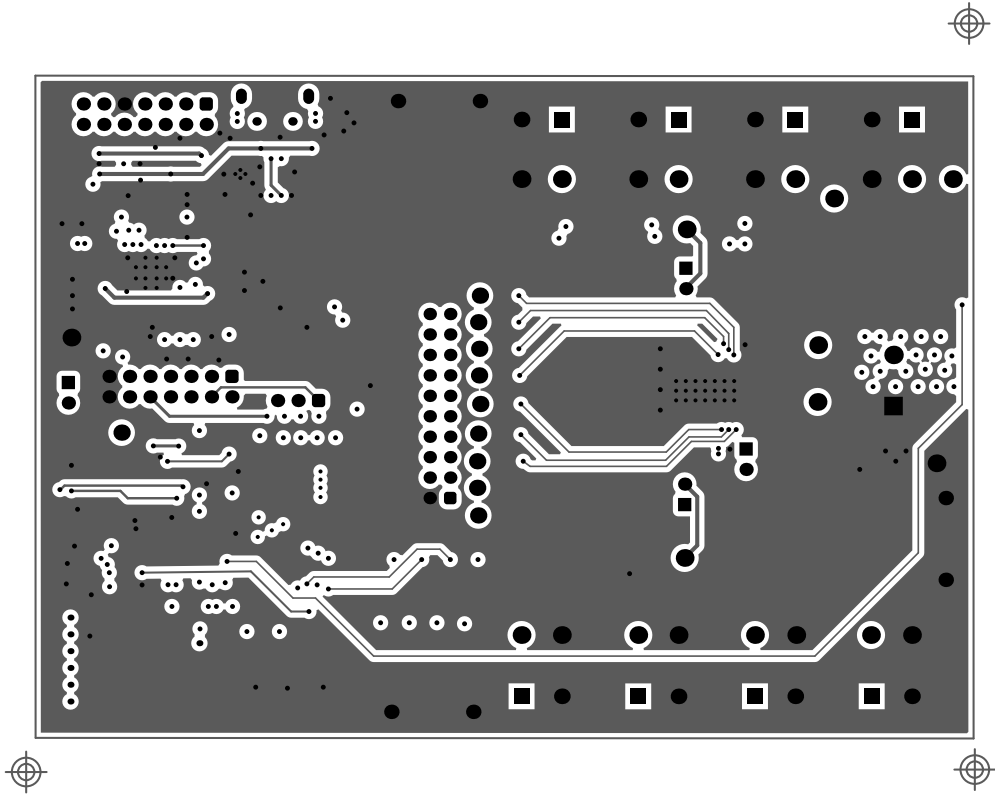
ALL ARTWORK VIEWED FROM TOP SIDE	BOARD #: DRV81008-Q1EVM_A	REV: A	SVN REV: Not in version control
LAYER NAME = Top Paste Outline	TID #: N/A		
PLOT NAME = New PrintOut 1	GENERATED : 08-06-2024	11:00:12 AM	TEXAS INSTRUMENTS



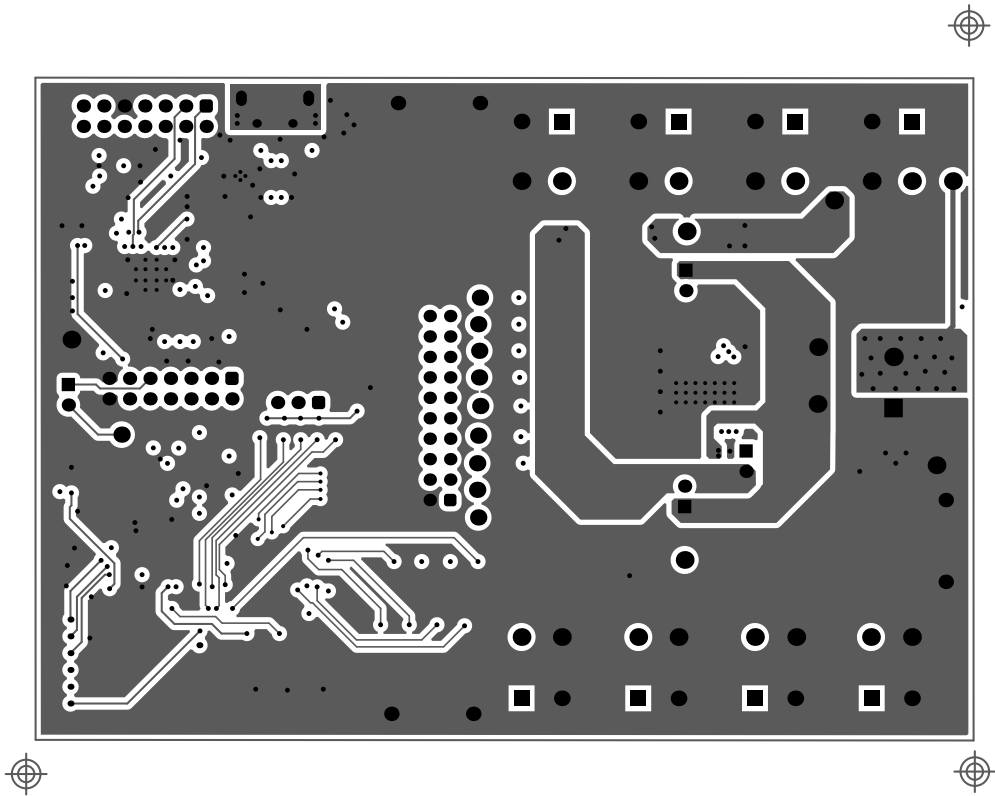
ALL ARTWORK VIEWED FROM TOP SIDE	BOARD #:DRV81008-QIEVM_A	REV: A	SUN REV: Not in version control
LAYER NAME = McpBbayerOutline	TID #: N/A		
PLOT NAME = New PrintOut 2	GENERATED : 08-06-2024 11:00:14 AM	TEXAS INSTRUMENTS	



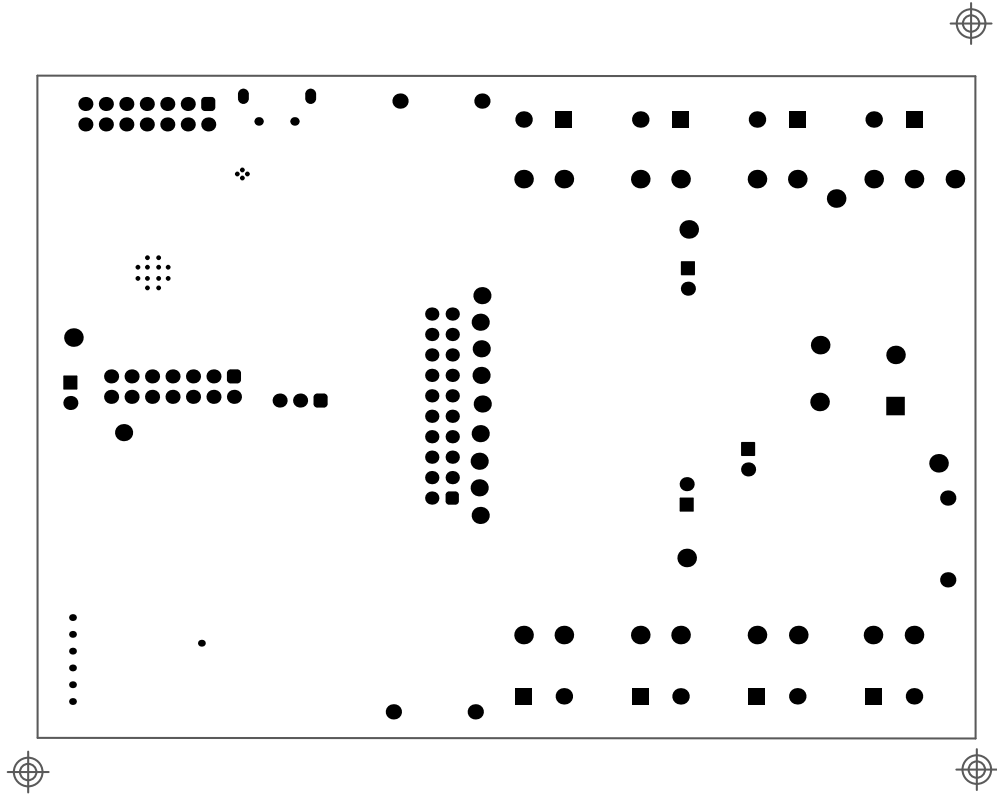
ALL ARTWORK VIEWED FROM TOP SIDE	BOARD #: DRV81008-Q1EVM_A	REV: A	SVN REV: Not in version control
LAYER NAME = Signal Layer Outline	TID #: N/A		
PLOT NAME = New PrintOut 3	GENERATED : 08-06-2024	11:00:16 AM	TEXAS INSTRUMENTS



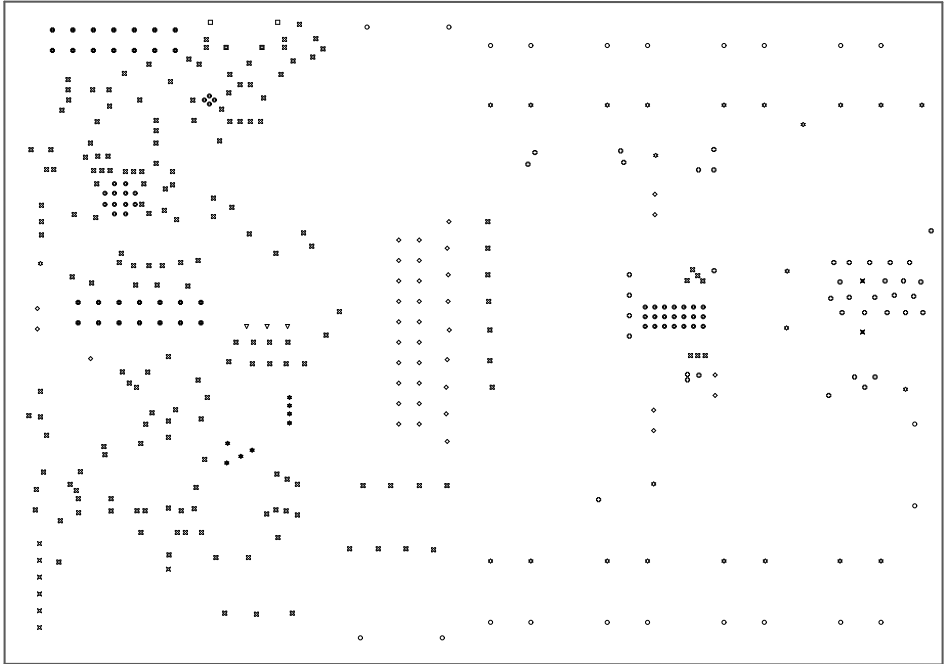
ALL ARTWORK VIEWED FROM TOP SIDE	BOARD #: DRV81008-Q1EVM_A	REV: A	SVN REV: Not in version control
LAYER NAME = Signal Layer 2	TID #: N/A		
PLOT NAME = New PrintOut 4	GENERATED : 08-06-2024	11:00:18 AM	TEXAS INSTRUMENTS



ALL ARTWORK VIEWED FROM TOP SIDE	BOARD #: DRV81008-Q1EVM_A	REV: A	SVN REV: Not in version control
LAYER NAME = CopperOutline	TID #: N/A		
PLOT NAME = New PrintOut 5	GENERATED : 08-06-2024	11:00:20 AM	TEXAS INSTRUMENTS



ALL ARTWORK VIEWED FROM TOP SIDE	BOARD #: DRV81008-Q1EVM_A	REV: A	SVN REV: Not in version control
LAYER NAME = BottomSolidline	TID #: N/A		
PLOT NAME = New PrintOut 6	GENERATED : 08-06-2024 11:00:21 AM	TEXAS INSTRUMENTS	

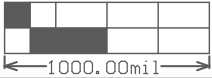
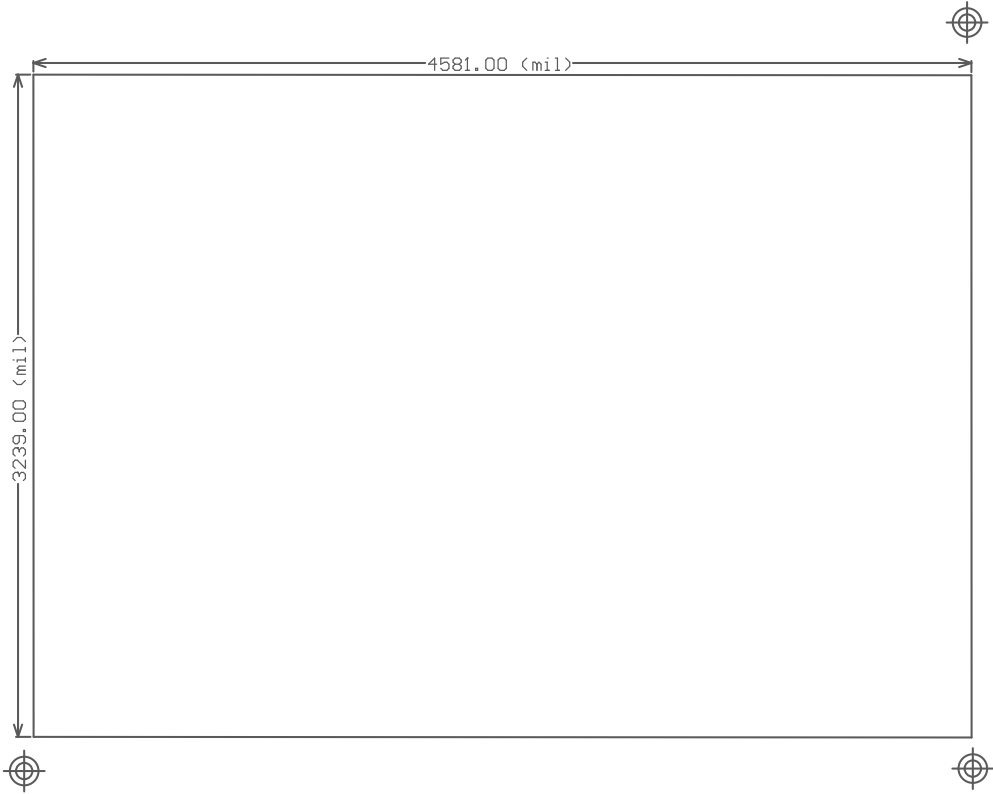


Drill Drawing :

Symbol	Quantity	Finished Hole Size	Plated	Hole Type	Drill Layer Pair	Hole Tolerance	Hole Length	Routed Path Length
○	37	7.87mil (0.200mm)	PTH	Round	Top Layer - Bottom Layer	+3mil/-3mil	-	-
⊙	40	8.00mil (0.203mm)	PTH	Round	Top Layer - Bottom Layer	+3mil/-3mil	-	-
⊛	8	10.00mil (0.254mm)	PTH	Round	Top Layer - Bottom Layer	+3mil/-3mil	-	-
⊞	179	16.00mil (0.406mm)	PTH	Round	Top Layer - Bottom Layer	+3mil/-3mil	-	-
⊞	7	17.72mil (0.450mm)	PTH	Round	Top Layer - Bottom Layer	+3mil/-3mil	-	-
◇	38	40.00mil (1.016mm)	PTH	Round	Top Layer - Bottom Layer	+3mil/-3mil	-	-
⊞	28	43.31mil (1.100mm)	PTH	Round	Top Layer - Bottom Layer	+3mil/-3mil	-	-
▽	3	45.28mil (1.150mm)	PTH	Round	Top Layer - Bottom Layer	+3mil/-3mil	-	-
○	22	51.18mil (1.300mm)	PTH	Round	Top Layer - Bottom Layer	+3mil/-3mil	-	-
⊞	2	59.06mil (1.500mm)	PTH	Round	Top Layer - Bottom Layer	+3mil/-3mil	-	-
☆	24	63.00mil (1.600mm)	PTH	Round	Top Layer - Bottom Layer	+3mil/-3mil	-	-
⊞	2	25.59mil (0.650mm)	PTH	Slot	Top Layer - Bottom Layer	+3mil/-3mil	29.53mil (0.750mm)	3.94mil (0.100mm)
□	2	51.18mil (1.300mm)	PTH	Slot	Top Layer - Bottom Layer	+3mil/-3mil	29.53mil (0.750mm)	-21.65mil (-0.550mm)
392 Total								

Slot definitions : Routed Path Length = Calculated from tool start centre position to tool end centre position.
Hole Length = Routed Path Length + Tool Size = Slot length as defined in the PCB layout

ALL ARTWORK VIEWED FROM TOP SIDE	BOARD #:DRV81008-GIEUM_A	REV: A	SUN REV: Not in version control
LAYER NAME = Drill Drawing	TID #: N/A		
PLOT NAME = New PrintOut 7	GENERATED : 08-06-2024 11:00:27 AM	TEXAS INSTRUMENTS	



ALL ARTWORK VIEWED FROM TOP SIDE	BOARD #:DRV81008-QIEVM_A	REV: A	SUN REV: Not in version control
LAYER NAME = M2 Board Dimensions	TID #: N/A		
PLOT NAME = New PrintOut 8	GENERATED : 08-06-2024 11:00:29 AM		TEXAS INSTRUMENTS



ALL ARTWORK VIEWED FROM TOP SIDE	BOARD #:DRV81008-QIEVM_A	REV: A	SUN REV: Not in version control
LAYER NAME = BotBoardOutline	TID #: N/A		
PLOT NAME = New PrintOut 9	GENERATED : 08-06-2024 11:00:31 AM		TEXAS INSTRUMENTS